



COULEURS - COLOURS - COLORES
LES BASIQUES - BASICS - BÁSICOS



La Sélection - The Selection - La Selección



RAL 1013*



RAL 1015*



RAL 1018*



RAL 3000*



RAL 3004*



RAL 5002*



RAL 5010*



RAL 5017*



RAL 5021*



RAL 5024*



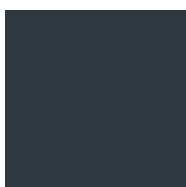
RAL 6005*



RAL 6021*



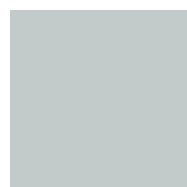
RAL 7012*



RAL 7016*



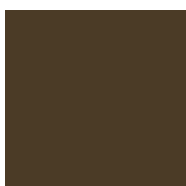
RAL 7024*



RAL 7035*



RAL 7037*



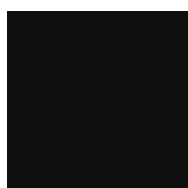
RAL 8014*



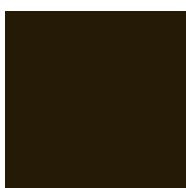
Brun
Brown mat
Marron mate



Gris galet brillant
Bright Grey Galet
Gris Galet brillante



Noir profond Ral 9005 mat
Ral 9005 mat
Ral 9005 mate



Noir 2100 sablé
Black 2100 sablé
Negro 2100 sablé

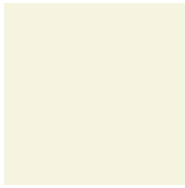


Noir 2200 sablé
Black 2200 sablé
Negro 2200 sablé

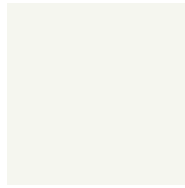


Gris 2900 sablé
Grey 2900 sablé
Gris 2900 sablé

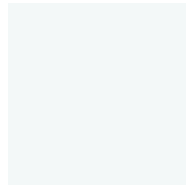
Les Standards - Standards - Los Estándar



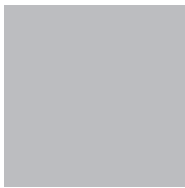
Blanc Technal
Technal White mat
Technal lacado blanco mate



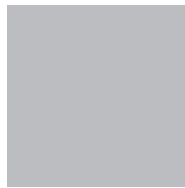
RAL 9010
Blanc Brillant
Bright White
Blanco brillante



RAL 9016
Blanc traffic brillant
Traffic Bright White
Blanco Trafic brillante

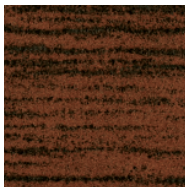


Argent satiné anodisé
Natural anodized
Anodizado natural

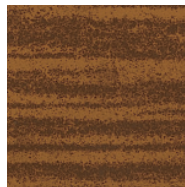


Métallique Argent mat
Silver metal mat
Plata metálico mate

Décor bois - Wood Effect - Efecto Madera



Chêne foncé
Dark oak
Roble oscuro



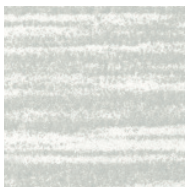
Chêne moyen
Medium oak
Roble medio



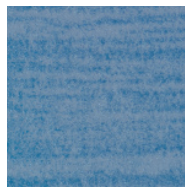
Chêne clair
Light oak
Roble claro



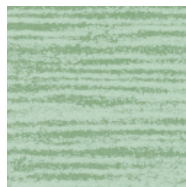
Douglas
Douglas
Douglas



Blanc cérusé
White ceruse
Blanco cal



Bleu cérusé
Blue ceruse
Azul cal



Vert cérusé
Green ceruse
Verde cal



Finitions brillantes ou satinées - Bright or satin finishings - Acabados brillantes o satinados

- Finition brillante : aspect lumineux et éclatant (82% de brillance, tolérance de $\pm 5\%$)
Bright finishing: luminous and bright sight (82% of brightness, $\pm 5\%$ of tolerance)
Acabado brillante: aspecto luminoso y brillante (82% de brillo, tolerancia de $\pm 5\%$)
- Finition mate : aspect soyeux, sobre (30% de brillance, tolérance de $\pm 5\%$)
Mat finishing: silky sight, sober design (30% of brightness, $\pm 5\%$ of tolerance)
Acabado mate: aspecto sedoso, sobrio (30% de brillo, tolerancia de $\pm 5\%$)

Les labels - Standards - Certificaciones

