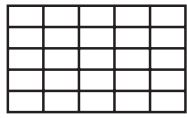


# Géode serreur filant module 62mm : mur-rideau à grille (MX)

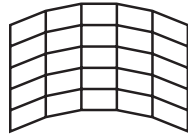


10/07 01 - 1.30

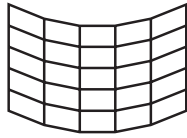
- Applications :



Mur-rideau vertical droit

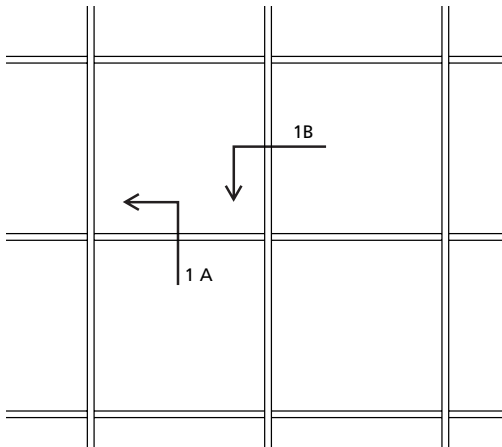


A pans coupés rentrants  
(angle maxi : 10°)

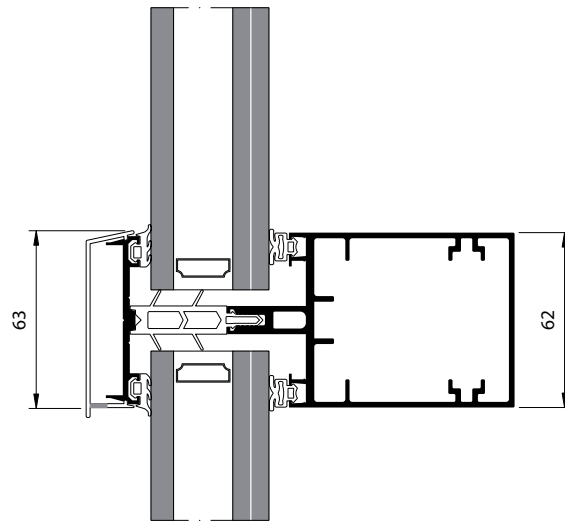


A pans coupés sortants  
(angle maxi : 10°)

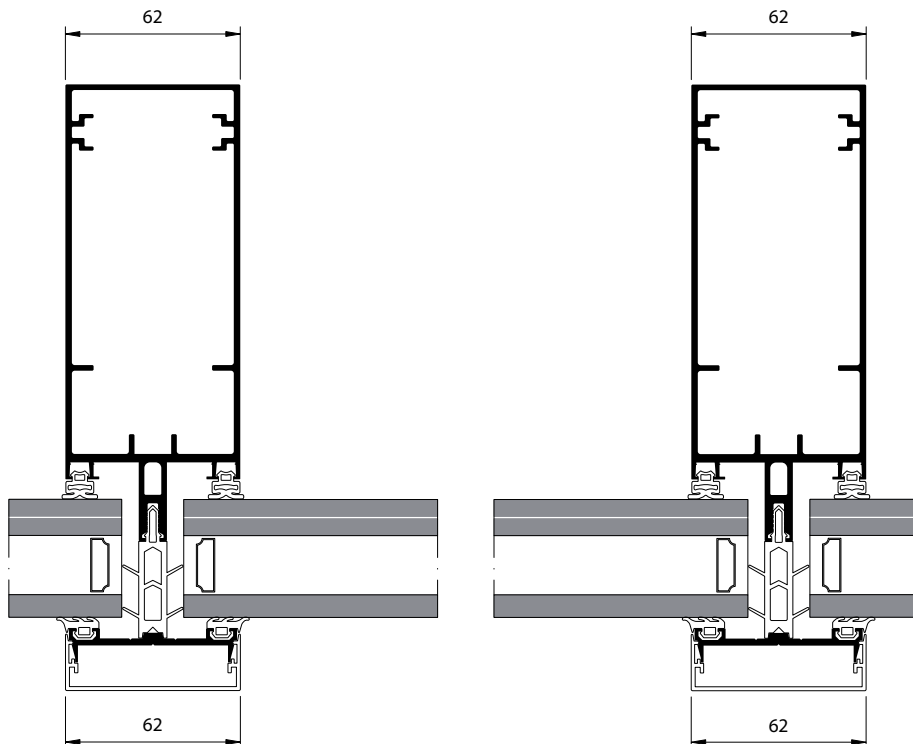
- Elévation (échelle 1/50) :



- Coupes (échelle 1/2) :



Coupe verticale 1 A



Coupes horizontales 1 B