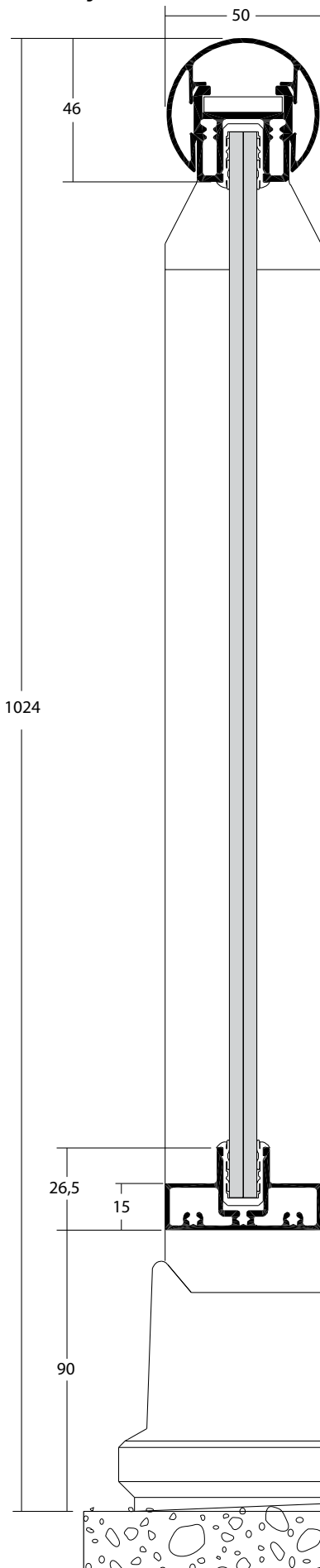


GYPSE double poteau accolé, remplissage sous main courante

Joined double post infill beneath handrail

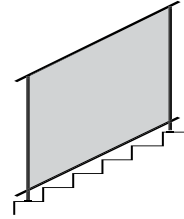
Anclaje doble unido, acristalamiento bajo pasamano



- Applications / Applications / Aplicaciones

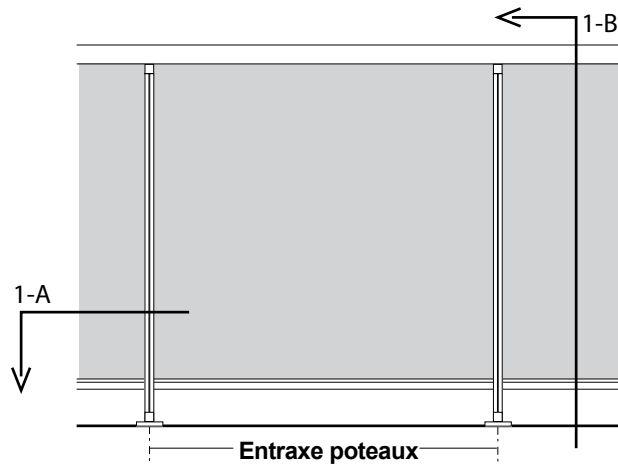


Droit sur dale, remplissage sous main courante
Straight, top-fixed to slab, infill beneath handrail
 Recto, acristalamiento bajo pasamano



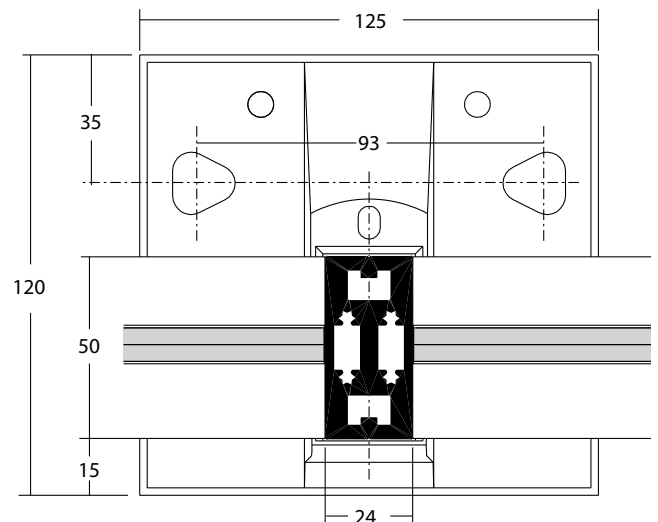
Rampant (jusqu'à 40°), remplissage sous main courante
Sloped (up to 40°), infill beneath handrail
 Escalera (hasta 40°), acristalamiento bajo pasamano

- Élévation / Elevation / Elevación



Distance between posts / Distancia entre anclajes
lieu public / public place / lugar público : 930 mm maxi.
lieu privé / private place / lugar privado : 1600 mm maxi.

- Echelle 1:2 / Scale 1:2 / Escala 1:2



Coupe horizontale 1A
Horizontal cross section / Corte horizontal

Coupe verticale 1B
Vertical cross section / Corte vertical