

Hotel AC Barcelona

Located in the Forum 2004 access area, the building integrates visually and functionally with the Barcelona Interna-



The hall is glazed with a Mecano curtain wall and traditional grid

tional Convention Centre, designed by the same architect, Josep Lluís Mateo. With its 368 rooms, it is the biggest hotel that the AC chain have built to

and services. The formal image of the building is defined by a play of volumes arising from the intersection of large cubic bodies that alternate opaque stone with transparent glass. A semi-space halfway up the building creates a block of rooms suspended in the air, causing a visual impression that seems to defy the laws of gravity. The rigidly rectangular floor shape generates an image that varies considerably, depending on the point of view: slender, almost blind sides that contrast with the force and change of materials of



Floor 14 of the building opens out to create the space where the Spa and swimming pool are located

date and also their most ambitious project in terms of design, technology

the north and south façades. The common areas (main entrance, lobby,

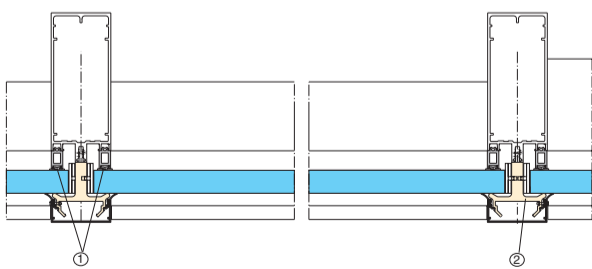


The intersection of volumes and the change of skins characterises the building's façade

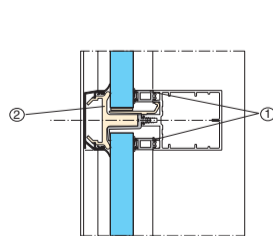
Spa and restaurants) and the "suspended rooms" are glazed with a Mecano curtain wall in order to provide maximum natural lighting and to open up views of the sea, the Forum area and the city. The spaces in the other zones are distributed with total regularity and are closed with Saphir hinged windows with a vertical axis, thermal break and a high level of sound-proofing.

For the service areas, simpler and more competitively priced Topaz series casement windows are used.

Horizontal Section



Vertical Section



TRADITIONAL MECANO GRID

- ① Vulcanised inner gaskets (automobile technology).
- ② Holding system using polyamide parts that reduce heat transmission and improve insulation.

Building: Hotel AC Barcelona.

Architect: MAP Architects (Josep Lluís Mateo and Marta Cervelló).

Developer: AC Hoteles.

Construction company: Sacyr edificación.

Aluminium carpentry: Technal.

Industrial Supplier: Talleres Moyser.

Tel. 93 462 28 16.

Solutions used: Mecano curtain wall with traditional grid, Saphir FXI and Topaz FB windows.



TECHNAL



TECHNAL®

Ter Building in Girona



This project by the architect Joan Puigcorbé meets the expansion requirements of an electronics company in the Ter valley in the province of Girona. The project started out from a specific

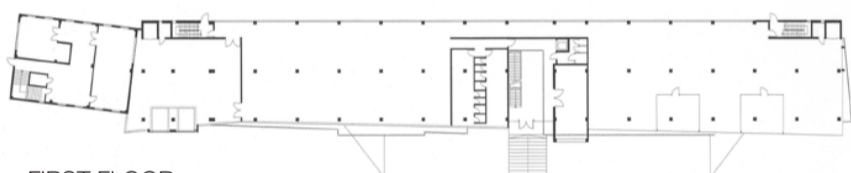
situation created by existing buildings, and consists of a construction that represents a new way of understanding the company in its context. The building is sited at the foot of the mountain, like

a hinge between the mountain and the riverbed, blending into the landscape and reflecting it in varying forms, depending on the position of the observer. As the architect himself explains, "The

location in an area of extraordinary natural beauty led us to believe that the most appropriate solution would be to create the sensation of being outside while inside the building. Spending the day in such a gorgeous landscape, while forming part of that landscape, is the basis for the idea of a building that becomes confused with surrounding elements: the sky, field, trees, wood, and mountains." The physical manifestation of the idea uses a horizontally applied MC curtain wall. "Once the project was defined," continues Joan Puigcorbé, "it was necessary to find a skin in which to wrap the activity. A sober, minimal skin, with the specifications necessary to guarantee sufficient heat insulation for an area in the Pyrenean foothills and which emphasises the interplay of volumes and geometries; all this at a cost to match the budget of a company in the process of consolidation. In the Technal semi-structural curtain wall, we found the formal and technical solution to make it possible

and which even improved on the idea as initially conceived. The curtain wall is fixed from floor to ceiling, emphasising the horizontal joints in the outer section with clamped covers, provided the

GROUND FLOOR



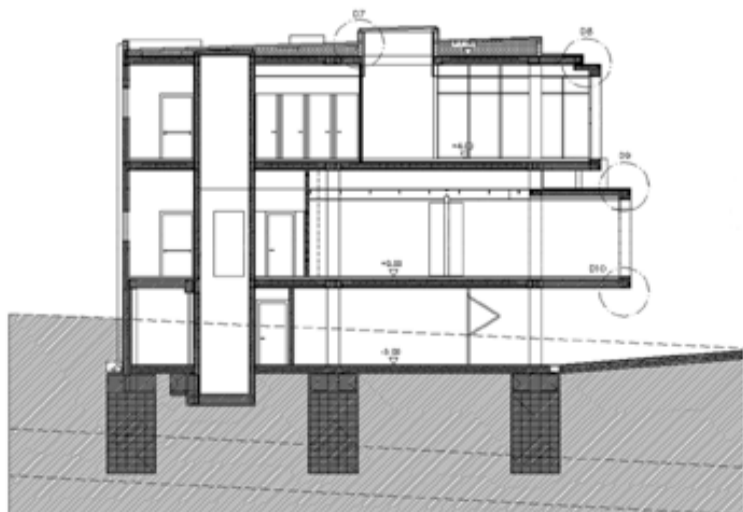
FIRST FLOOR



NORTH ELEVATION



WEST ELEVATION



Detail of the change in geometry in the main façade

solution for the main façade; a simple system for a broken geometry that gave us an optimum result." The MC curtain wall incorporates hidden "Italian" windows. The profiles are finished in metallic mat silver, while the windows use 6 and 8 mm tempered double-glazing, with 14 mm separation.

Building: Ter Building in Sant Joan de les Abadesses (Girona).

Architect: Joan Puigcorbé.

Developer: Tecnologia Electrónica del Ripollés, S.L.

Aluminium carpentry: Technal.

Industrial Supplier: E Plantalech SL (Red Aluminier Technal). Tel. 972 26 07 17.

Solutions used: MC horizontal curtain wall with hidden windows, PG doors, FCI casement and GBI sliding windows, Onyx rails.

E Plantalech SL of the Red Aluminier Technal

This company, based in Olot (Girona), was founded back in 1876. Since then, four generations have kept up the work of developing the art of forging and ironwork, bringing about the company's consolidation in the metal construction and aluminium



Image of the new E Plantalech facilities, expected to open at the end of 2004. It includes 1700 m² of workspace and 140 m² of showroom

work sector. E Plantech is among the first companies to become part of the Aluminier Technal project, with the aim of strengthening its links with the brand. "As well as providing technology and innovation," explains managing director Josep Maria Plantalech, "Technal allows us to stand out in an increasingly uniform market, thanks to its extremely well-known brand name." This policy, together with its tradition of emphasising quality, enables the company to participate in most of the significant building projects in the Girona province, including both residential buildings (of particular note is their collaboration with renowned architects such as the RCR studio of Aranda, Pigem and Vilalta) and non-residential projects: the restoration of the old Simon factory was awarded first prize by the Construction Companies and Developers of Spain in 2003. Thanks to its diverse client portfolio, E Plantalech use virtually all the series in the Technal range, with a slight preference for versions with thermal break, due to the region's harsh climate.

The Most Prestigious Building Work in Technal's Advertising

The Technal 2004 advertising campaign was launched in the second quarter of the year and will continue until December.

The building projects in which the brand has participated are the main element in the different adverts. As well as showing the product in its best light, in the buildings themselves, these spectacular photos also show off the wide variety and aesthetic value of the architecture produced in Spain, communicating the most relevant messages for each different sector of the public. In journals aimed at architects, building projects with well-known and respected testimonials are published. The images magnify the aesthetic achievement obtained by applying Technal products, while sections and details of metalwork explain the advantages of the chosen

solution. The adverts placed in the real estate and hotelier sector journals show windows and curtain walls in major projects, where the developers and hotel chains have placed their trust in Technal, above all, valuing the reliability of its quality chain, from the aluminium extrusion process to its on-site use. In decoration magazines, end customers can be seen enjoying life in dream houses with large windows opening onto exterior views. They are all houses produced by Red Aluminier industries. The campaign aims to position Technal as the most prestigious brand on the market, thanks to its quality and design and the professionalism of its installers.



Double page spread in decoration magazine



Advert in architectural journal



Advert in real estate and hotelier sector journals

Technal in Veteco

Around 900 professionals visited the Technal stand in the Salón Internacional de la Ventana y el Cerramiento Acristalado (Windows and Glass Wall Trade Show) held in Madrid in May. The most well-established products and innovations were exhibited in over



200 m² of stand designed by the architects Clotet and Llonguera, with the aim of presenting Technal applications in detached and collective housing, restoration work and institutional buildings. Among the new products, of particular note were the WicTec and WicSky curtain walls, added to the Technal range by the German brand Wicona, part of the Hydro group, and the new vertical application of the MC Plus product. Among the product series for windows, the new Saphir FXI 65, with 65 mm framing module and thermal break for extreme climates, aroused a great deal of interest, as did the Quartz series, a complete range of "ready-made" aluminium siding with certified quality stamp.



TECHNAL

House in Corrubedo



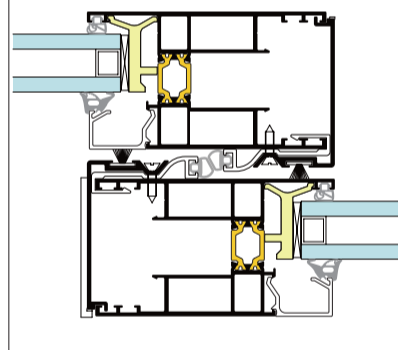
Stone, concrete, glass white rough plastering are the finishes that determine the façade make-up

Located on the sea front in this village in A Coruña, the house is incorporated into partition walls, maintaining the harmony of the heights, materials and

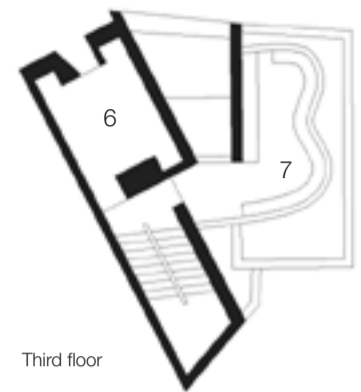
colours of local buildings. The architect David Chipperfield experiments bravely with the volume and distribution of the spaces, creating two clearly differentiated façades: one facing the street, which is practically blind, and the other facing the ocean, with large openings. These clearly show the four levels on which the house is organised. The ground floor houses three small bed-

rooms and the beach access via a concrete ramp; the gaps are closed with Saphir FXi casement balcony doors. The main room in the house, a diaphanous space including kitchen and dining room and lounge, occupies almost all of the first floor, opening out completely onto a sea view through GTi raisable sliding doors which go from floor to ceiling and wall to wall. The second floor houses the bedrooms with a terrace and the third floor has the

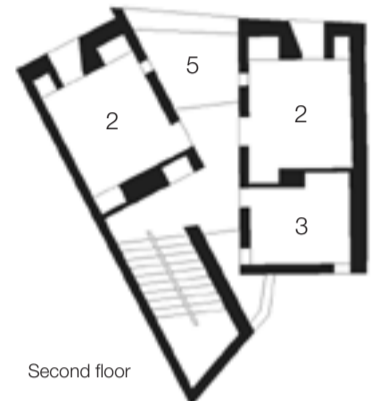
The central section of the GTi raisable sliding window



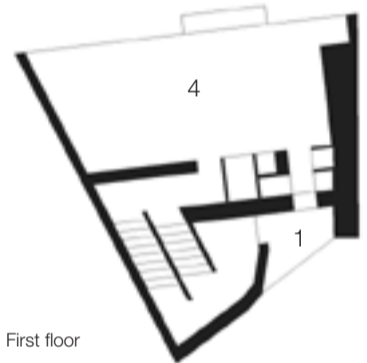
study with terraced roof. The windows, smaller than on the lower floors, use a smaller GTi sliding window, and Saphir FXi series casement and fixed windows. The extreme Atlantic climate means that all the aluminium work incorporates thermal break and marine-quality EPDM watertight perimeter joints.



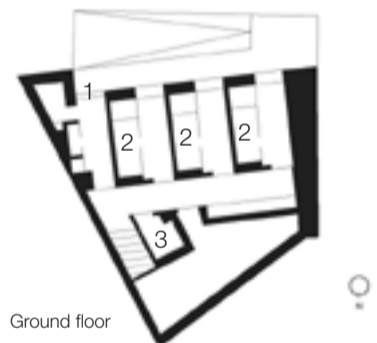
Third floor



Second floor



First floor



Ground floor

- 1. Access
- 2. Bedroom
- 3. Bathroom
- 4. Lounge-dining room-kitchen
- 5. Terrace
- 6. Study
- 7. Terrace roof

Building: Detached house in Corrubedo (A Coruña).

Architect: David Chipperfield.

Developer: David Chipperfield.

Construction company: Serinfra SA.

Aluminium carpentry: Technal.

Industrial Supplier: Aluminios Pazos SL.

Tel. 986 85 43 89.

Solutions used: Saphir FXi casement windows, GTi raisable sliding windows.

Photography: Hélène Binet.



The GTi windows open onto spectacular views of the Galician coast

Technal® is a brand of the



Hydro Building Systems group
Zona Industrial Sector Autopistas • C/ Diesel, 1
08150 Parets del Vallès (Barcelona) • Tel. 902 22 23 23
Fax 93 562 22 50 • technal@technal.hydro.com • www.technal.es