

# TECHNAL TRAINING 2025

**TRAINING PROSPECTUS**  
2025



By  Hydro





UCEN  
MANCHESTER

UCEN OPENING TIMES



# TRAINING WITH TECHNAL

## ➤ INTRODUCTION

### ENSURE YOUR TEAM HAVE THE CURRENT KNOWLEDGE ON TECHNAL AND THE BUILDING AND CONSTRUCTION INDUSTRY

To ensure that our customers are kept up to date with the latest developments in our products and services, we provide to you our Training Prospectus and Calendar. This document contains details of each training seminar, including a description of the content for each event and the job roles that would benefit from attending.

Additionally, the prospectus provides information on how to book a place at an event and the locations of each session. Training seminars will take place at one of our current UK locations: Tewkesbury, Wakefield, Central London, or Milton Keynes (safety-related topics only).

To book your space on a training event in the calendar, follow the instructions in the How to Request Training section of this prospectus.

#### PRODUCT INTRODUCTION TRAINING

These one-day seminars cover products from four main groups: Windows, Doors, Sliders, and Curtain Walling. These Product Introduction courses are accredited by GQA Qualifications Limited, an independent training provider and assessor. We have partnered with GQA to offer training that can lead to a qualification demonstrating competence in the selection and specification of TECHNAL products.

After attending a product training session, each participant will have the opportunity to sit an assessment, hosted by GQA. via an online multiple-choice quiz to achieve their qualification.

#### SAFETY TRAINING

GQA-accredited training on safety-related topics, such as Fire Safety and Safe Operation & Cleaning, is delivered through one-day, face-to-face courses at one of our four locations.

#### SOFTWARE TRAINING

Two-day courses on our fabrication and quotation software TechDesign is available. This covers all features and functionality of the system. Our acoustic performance calculation tool TechAcoustic has training available on request.

#### INTRODUCTION TO EUROCODES

In addition, TECHNAL offers training in the use of our spreadsheet-based calculation tool, which enables customers to perform initial wind load assessments and static requirement calculations for their projects in line with relevant Eurocodes. This training will take place in Tewkesbury, Wakefield, or Central London.

#### PRODUCT FABRICATION TRAINING

Product Fabrication Training is available through your Account Manager or our Technical Support department and will be conducted by our Field Service Engineers at your premises.

# PRODUCT INTRODUCTION TRAINING

## COMPETENCE TRAINING



Our Product Introduction training is suitable for colleagues from all areas of your business whether they are from Sales, Estimating, Design, or Production.

Training will include all features and benefits of our products along with examples of applications.

Also included will be information on how our products comply with current standards and initiatives relating to weather performance, conservation of energy, security, sustainability and acoustic performance.

The course provides training in the following product types;

- Tental 50/ 60 Curtain wall system
- Soleal Next Door Systems
- Soleal Next Window Systems
- Sliding Systems

Further information on the contents of each product group module can be found in the following pages of this prospectus.

After attending our Product Training events participants will have an understanding of how and where Technal Products can be specified to meet the requirements of the building project.



# PRODUCT INTRODUCTION

## CURTAIN WALL



The TENTAL 50 / 60 Curtain Walling Product Training is suitable for colleagues in all areas of your business whether they are a part of the Sales, Estimating, Design or Production departments.

This course provides training in the following aspects of facade manufacture and design:

- Introduction to TENTAL
- Product Options
- Performance
- Sustainability
- Structure
- Transom Sealing
- Drainage
- Glass Supports
- Glazing and Glazing Gaskets
- Facets, 90 degree corners and Angled Transoms
- Mullion Joint
- Security
- Installation
- Summary





# PRODUCT INTRODUCTION

## WINDOW SYSTEMS



The SOLEAL Next Window Product Training is suitable for colleagues from all areas of your business whether they are from Sales, Estimating, Design or Production teams.

This course provides training in the following aspects of window selection and manufacture:

- Introduction of the SOLEAL Next Concept (market segments, features & benefits and terminology)
- Materials and Sustainability
- Product Range - Modularity and Applications
- Performance & Specification
- General Arrangements
- Range of Profiles
- Accessories & Hardware
- Gaskets & Glazing
- Fabrication & Assembly
- Tooling
- Installation

We also have other products within our window offer such as DF75Si window suite, Dualframe 75 casement window, Crown casement window (steel replacement domestic window) and training for these products can be arranged on request.



# PRODUCT INTRODUCTION

## DOOR SYSTEMS

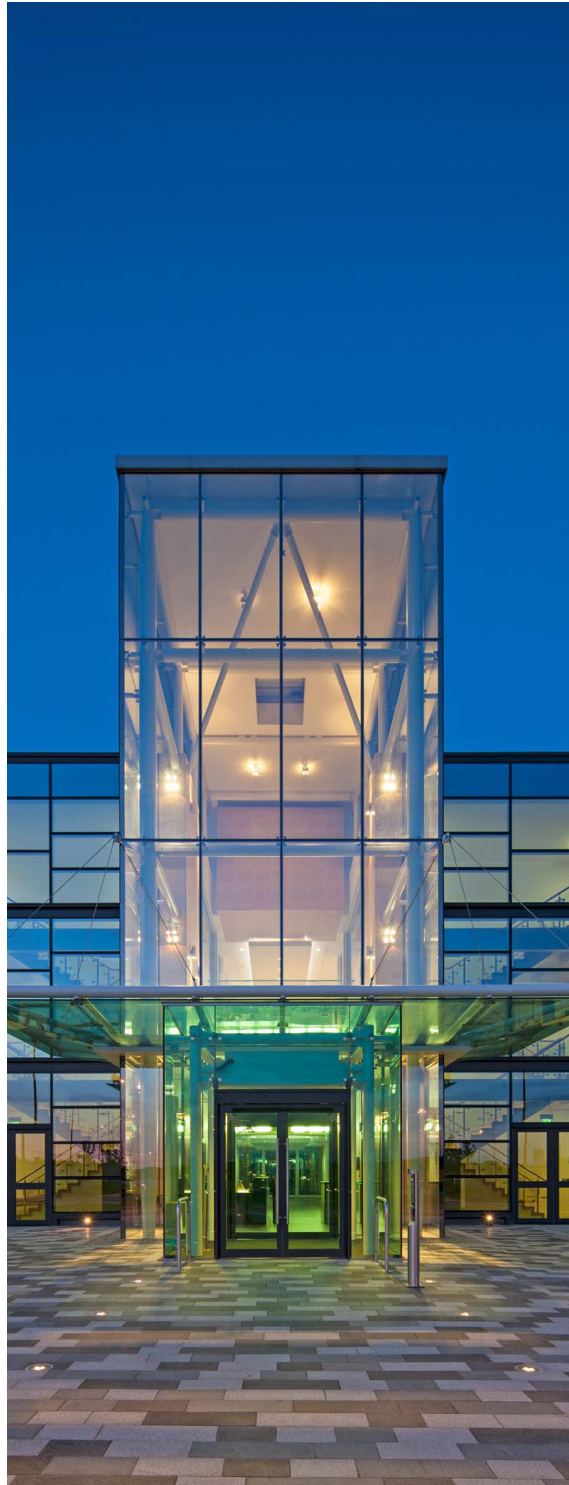


The SOLEAL Next Door System Product Training is suitable for colleagues from all areas of your business whether they are from Sales, Estimating, Design or Production departments. This course provides training for your teams in the following aspects of swing door product selection and manufacture:

- Product Variants
- Design
- Comfort
- Sustainability
- Target Segments
- General Benefits
- Performance
- Standard Sections
- Range of Profiles
- Accessories, Fittings and Hardware
- Fabrication and Assembly
- Glazing
- Tooling
- Installation

We also have a range of other door systems: such as STII and Dualsecure, and training can be arranged for each of these product ranges and their variants on request.

- Product scope and applications



# PRODUCT INTRODUCTION

## SLIDING SYSTEMS



The TECHNAL Sliding Door Systems Product training is suitable for colleagues from all areas of your business whether they are from Sales, Estimating, Design or Production.

TECHNAL has the following range of Sliding Systems:

- TIGAL Pull Sliding Door
- AMBIAL Folding / Sliding Door
- CONFORT 160S Sliding door
- CROWN Bi-Fold Door
- CROWN Patio Door

The course provides training in the following aspects of swing door product selection and manufacture:

- Definitions
- Product scope, applications & variants
- Key features
- Performance & Specification
- Product offer: range of profiles & hardware
- Glazing
- Fabrication methods & tooling
- Installation principles
- Generate job or project cost estimates
- Produce material orders
- Provide cutting and manufacturing information
- Connect via COM@LU to upload orders/ check stocks
- CNC Via ALUCAM





# PRODUCT TRAINING CALENDAR\*

MONTH	DATES	TITLE	LOCATION	DURATION
January	07.01.2025	Soleal Next Window	Tewkesbury	1 Day
January	08.01.2025	Soleal Next Door	Tewkesbury	1 Day
January	09.01.2025	Tental 50/60 Curtain Wall	Tewkesbury	1 Day
January	16.01.2025	Regional Product Introduction	North East	1 Day
January	21.01.2025	Regional Product Introduction	South West	1 Day
January	28.01.2025	Soleal Next Window	Wakefield	1 Day
January	29.01.2025	Soleal Next Door	Wakefield	1 Day
January	30.01.2025	Tental 50/60 Curtain Wall	Wakefield	1 Day
February	13.02.2025	Regional Product Introduction	South East	1 Day
February	18.02.2025	Tental 50/60 Curtain Wall	Tewkesbury	1 Day
February	19.02.2025	Soleal Next Door	Tewkesbury	1 Day
February	20.02.2025	Soleal Next Window	Tewkesbury	1 Day
February	25.02.2025	Regional Product Introduction	East Midlands	1 Day
March	06.03.2025	Regional Product Introduction	South Wales	1 Day
March	11.03.2025	Tental 50/60 Curtain Wall	Wakefield	1 Day
March	12.03.2025	Soleal Next Door	Wakefield	1 Day
March	13.03.2025	Soleal Next Window	Wakefield	1 Day
March	25.03.2025	Regional Product Introduction	South East	1 Day
April	01.04.2025	Soleal Next Door	Tewkesbury	1 Day
April	02.04.2025	Tental 50/60 Curtain Wall	Tewkesbury	1 Day
April	03.04.2025	Soleal Next Window	Tewkesbury	1 Day
April	10.04.2025	Regional Product Introduction	North West	1 Day
April	15.04.2025	Regional Product Introduction	South West	1 Day
April	22.04.2025	Soleal Next Door	Wakefield	1 Day
April	23.04.2025	Tental 50/60 Curtain Wall	Wakefield	1 Day
April	24.04.2025	Soleal Next Window	Wakefield	1 Day
May	08.05.2025	Regional Product Introduction	South East	1 Day
May	13.05.2025	Soleal Next Window	Tewkesbury	1 Day

\* in certain circumstances locations and dates may change due to demand.

# PRODUCT TRAINING CALENDAR\*

MONTH	DATES	TITLE	LOCATION	DURATION
May	14.05.2025	Soleal Next Door	Tewkesbury	1 Day
May	15.05.2025	Tental 50/60 Curtain Wall	Tewkesbury	1 Day
May	20.05.2025	Regional Product Introduction	North East	1 Day
May	27.05.2025	Regional Product Introduction	East Midlands	1 Day
June	03.06.2025	Soleal Next Window	Wakefield	1 Day
June	04.06.2025	Soleal Next Door	Wakefield	1 Day
June	05.06.2025	Tental 50/60 Curtain Wall	Wakefield	1 Day
June	17.06.2025	Regional Product Introduction	South East	1 Day
June	24.06.2025	Tental 50/60 Curtain Wall	Tewkesbury	1 Day
June	25.06.2025	Soleal Next Window	Tewkesbury	1 Day
June	26.06.2025	Soleal Next Door	Tewkesbury	1 Day
July	03.07.2025	Regional Product Introduction	North West	1 Day
July	10.07.2025	Regional Product Introduction	South Wales	1 Day
July	15.07.2025	Tental 50/60 Curtain Wall	Wakefield	1 Day
July	16.07.2025	Soleal Next Window	Wakefield	1 Day
July	17.07.2025	Soleal Next Door	Wakefield	1 Day
July	31.07.2025	Regional Product Introduction	South East	1 Day
August	05.08.2025	Soleal Next Window	Tewkesbury	1 Day
August	06.08.2025	Soleal Next Door	Tewkesbury	1 Day
August	07.08.2025	Tental 50/60 Curtain Wall	Tewkesbury	1 Day
August	12.08.2025	Regional Product Introduction	North East	1 Day
August	19.08.2025	Regional Product Introduction	South West	1 Day
August	26.08.2025	Soleal Next Window	Wakefield	1 Day
August	27.08.2025	Soleal Next Door	Wakefield	1 Day
August	28.08.2025	Tental 50/60 Curtain Wall	Wakefield	1 Day
September	09.09.2025	Regional Product Introduction	South East	1 Day
September	16.09.2025	Tental 50/60 Curtain Wall	Tewkesbury	1 Day
September	17.09.2025	Soleal Next Door	Tewkesbury	1 Day



# PRODUCT TRAINING CALENDAR\*

MONTH	DATES	TITLE	LOCATION	DURATION
September	18.09.2025	Soleal Next Window	Tewkesbury	1 Day
September	25.09.2025	Regional Product Introduction	North West	1 Day
October	02.10.2025	Regional Product Introduction	East Midlands	1 Day
October	07.10.2025	Tental 50/60 Curtain Wall	Wakefield	1 Day
October	08.10.2025	Soleal Next Door	Wakefield	1 Day
October	09.10.2025	Soleal Next Window	Wakefield	1 Day
October	23.10.2025	Regional Product Introduction	South East	1 Day
October	28.10.2025	Soleal Next Door	Tewkesbury	1 Day
October	29.10.2025	Soleal Next Window	Tewkesbury	1 Day
October	30.10.2025	Tental 50/60 Curtain Wall	Tewkesbury	1 Day
November	04.11.2025	Regional Product Introduction	North East	1 Day
November	11.11.2025	Regional Product Introduction	South West	1 Day
November	18.11.2025	Soleal Next Door	Wakefield	1 Day
November	19.11.2025	Soleal Next Window	Wakefield	1 Day
November	20.11.2025	Tental 50/60 Curtain Wall	Wakefield	1 Day
December	02.12.2025	Regional Product Introduction	South East	1 Day
December	09.12.2025	Soleal Next Window	Tewkesbury	1 Day
December	10.12.2025	Tental 50/60 Curtain Wall	Tewkesbury	1 Day
December	11.12.2025	Soleal Next Door	Tewkesbury	1 Day
December	18.12.2025	Regional Product Introduction	North West	1 Day

- \* in certain circumstances locations and dates may change due to demand.

# SAFETY TRAINING

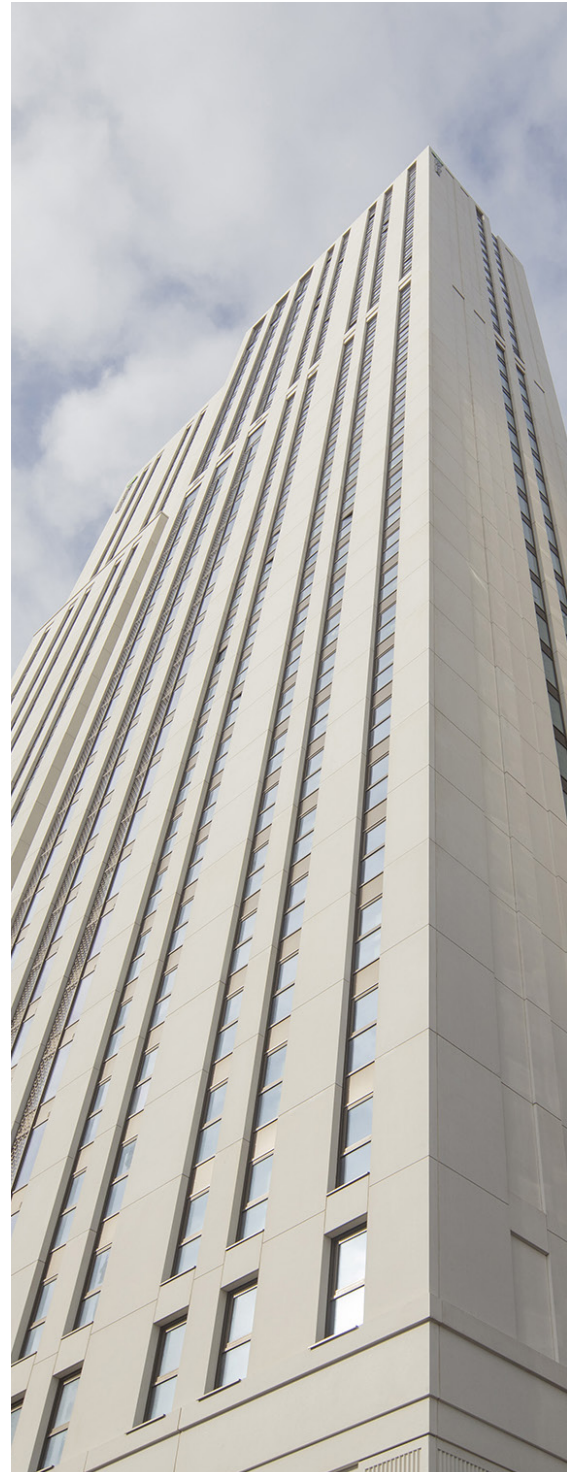
## COMPETENCE TRAINING



In response to the need for competency within the sector, TECHNAL has introduced 2 new courses aimed at updating trainees on safety critical aspects of how doors, windows and curtain wall perform and the relevant Standards and Regulations within the UK;

- **Introduction to Fire Competence in Aluminium Fenestration Systems**
- &
- **Safe Use and Cleaning of Windows, Doors and Curtain Wall**

Safety Training Courses are not available online.





# SAFETY TRAINING

## ➤ INTRODUCTION TO FIRE COMPETENCE IN ALUMINIUM FENESTRATION SYSTEMS



**This GQA accredited one day course from TECHNAL will demonstrate how glazed windows, doors and curtain wall are impacted by fire.**

### **Content:**

- Overview of the impact of the recent Building Safety Legislation on competence, especially in safety-critical construction products,
- The basics of fire and its propagation, how its spread can be limited by fire resistant glazing systems and how such systems are classified for their effectiveness at containing the effects of fire. We then look at what building regulations require and some relevant standards.
- Windows and doors as part of the fire escape strategy, what the Building Regulations and relevant standards say, and how and when to select and use the appropriate type of door or window. We will discuss the various classifications of escape hardware, the related entry or “panic” functions, and UK conformity marking for escape products.
- The issue of External Fire Spread has received much attention and amendment in the Building Regulations in recent years, so we will look in detail at the updated Regulations and supplementary guidance.
- Advice is given on further reading.

The training concludes with a mandatory assessment paper.

### **Course Outcomes:**

Through a mix of the course content and the end of course assessment process, candidates will acquire a working understanding of the three main topic areas which should enable them to select products for the correct application. The accreditation by GQA means that those who pass the assessment can demonstrate to third parties that they have been through a structured learning and assessment process.

### **Who is the course for?**

The course is suited to the following job roles and the management of those roles within the fenestration industry:

Estimators

Designers

Contract supervisors

Any other role where product selection is made, or product advice given. For those who already specialise in fire this is a chance to understand the specifics of how it applies to fenestration.

### **What is not covered?**

The course focuses on glazed fenestration products. Other façade elements such as cladding, rainscreen, balconies, solar shading are not within scope.

#### **Course Delivery**

The one-day course is delivered in a classroom environment by Technal at one of the following locations:

Milton Keynes

Tewkesbury

Wakefield

Central London

### **Course Delivery**

This course is chargeable at £180.00 + VAT per delegate

This course is not available online

# SAFETY TRAINING

## ➤ SAFE USE & CLEANING OF WINDOWS, DOORS AND FACADES



This GQA accredited one day course from Technal will demonstrate how the building regulations and standards in the UK call for windows, doors and curtain wall designs and products to be safe for building occupants and users. Each year in England and Wales a similar number of people die from falls from buildings as sadly died in the Grenfell Tower tragedy. Ideally the course should be taken after the Fire Competence course (see above) as there is a less comprehensive overview of the Building Safety Legislation, but this is not mandatory.

### **Content:**

- Background to statistics and a discussion of the risks and conflict of demands.
- Overview of relevant building regulations and standards.
- Safe use of windows (ventilation) including reach to controls, risk of falling, guarding, forces and weights, collision and impact and load bearing safety devices. Each topic is referenced against the building regulations and applicable standards.
- Topics as above but specifically with regard to the safe cleaning of windows.
- Windows falling from buildings.

Worked examples of typical window configurations and building designs and a discussion of the extent to which they comply with the building regulations and standards. with a mandatory assessment paper.

### **Course Outcomes:**

Through a mix of the course content and the end of course assessment process, candidates can acquire a working understanding of the safety hazards faced by building users and the criteria for resolving them. This should enable them to design window and façade configurations and select products for the correct application. The accreditation by GQA means that those who pass the assessment can demonstrate to third parties that they have been through a structured learning and assessment process.

### **Who is the course for?**

The course is suited to the following job roles and the management of those roles within the fenestration industry:

Estimators

Designers

Contract supervisors

Any other role where product selection is made, or product advice given. For those who already specialise in fire this is a chance to understand the specifics of how it applies to fenestration.

### **What is not covered?**

The course focuses on glazed fenestration products. Other façade elements such as cladding, rainscreen, balconies, solar shading are not within scope.

### **Course Delivery**

The one-day course is delivered in a classroom environment by Technal at one of the following locations:

Milton Keynes

Tewkesbury

Wakefield

Central London

### **Course Delivery**

This course is chargeable at £180.00 + VAT per delegate

This course is not available online.



# SAFETY TRAINING CALENDAR

MONTH	DATES	TITLE	LOCATION	DURATION
February	11.02.2025	Fire Safety	Tewkesbury	1 Day
February	25.02.2025	Operation & Cleaning Safety	Milton Keynes	1 Day
March	04.03.2025	Fire Safety	London	1 Day
March	18.03.2025	Operation & Cleaning Safety	Wakefield	1 Day
April	08.04.2025	Fire Safety	Milton Keynes	1 Day
April	22.04.2025	Operation & Cleaning Safety	Tewkesbury	1 Day
May	13.05.2025	Fire Safety	Wakefield	1 Day
May	27.05.2025	Operation & Cleaning Safety	London	1 Day
June	10.06.2025	Fire Safety	Tewkesbury	1 Day
June	24.06.2025	Operation & Cleaning Safety	Milton Keynes	1 Day
July	08.07.2025	Fire Safety	London	1 Day
July	22.07.2025	Operation & Cleaning Safety	Wakefield	1 Day
August	05.08.2025	Fire Safety	Milton Keynes	1 Day
August	19.08.2025	Operation & Cleaning Safety	Tewkesbury	1 Day
September	09.09.2025	Fire Safety	Wakefield	1 Day
September	23.09.2025	Operation & Cleaning Safety	London	1 Day
October	14.10.2025	Fire Safety	Tewkesbury	1 Day
October	28.10.2025	Operation & Cleaning Safety	Milton Keynes	1 Day
November	11.11.2025	Fire Safety	London	1 Day
November	25.11.2025	Operation & Cleaning Safety	Wakefield	1 Day

# TECHDESIGN

## SOFTWARE TRAINING

TECHDESIGN is a software package created and maintained by Hydro Building Systems.

It is offered to our customers to enable them to easily and quickly carry out the following activities;

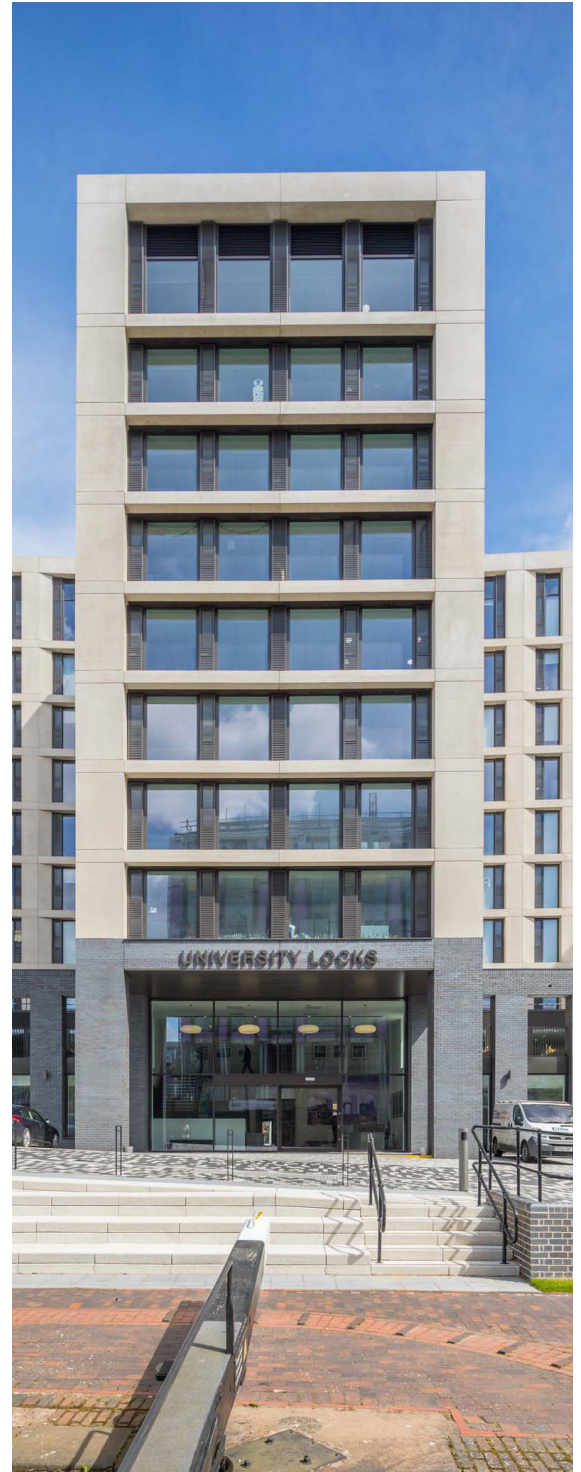
- Generate job or project cost estimates
- Produce material orders
- Provide cutting and manufacturing information
- Connect via COM@LU to upload orders/ check stocks
- CNC via ALUCAM

The TechDesign two day course provides training in the following functions to enable you to process your projects through the software;

- Creating Jobs (projects) and phases
- Job Defaults: Glass types, surface finish, connection methods
- Default Calculation Table: set material discounts
- Creating Groups (Customers etc)
- Creating constructions; windows, doors and curtain wall including user default constructions
- Simple Cross sections
- Drawing Generation
- Parts lists etc.
- User set up – Linked to customer calculation Table
- User Defaults

Printing Reports:

- Job Cost
- Offer (Estimate)
- Material Order/Glass order
- Cutting List, Manufacturing Lists, U-Value reports, etc.
- EPD Reports





# INTRODUCTION TO EUROCODES TRAINING

We have developed an in-house spreadsheet to assist our customers with carrying out project initial wind load assessments and profile static requirements. This software and training consists of the following elements:

- Introduction to Eurocode in line with wind load.
- Assessment of a project windload (Façade Pressure)
- Assessment of the profile static requirement;
- Single span and multi-span mullions
- Transom wind loads and dead loads
- Transom with stud mullion
- Forces in curtain wall transom end connections
- Interpretation of results and selection of correct profiles to suit site conditions.

The training will be over 1/2 day and take place at our offices Tewkesbury, Wakefield, and London.

# SOFTWARE TRAINING CALENDAR\*

MONTH	DATES	TITLE	LOCATION	DURATION
January	16/01/2025	Introduction to Eurocodes	Tewkesbury	1/2 Day
January	14/01/2025	TechDesign Training	Wakefield	Two Days
January	22/01/2025	TechDesign Training	Tewkesbury	Two Days
February	11/02/2025	TechDesign Training	London	Two Days
February	20/02/2025	Introduction to Eurocodes	Wakefield	1/2 Day
February	26/02/2025	TechDesign Training	Wakefield	Two Days
March	04/03/2025	TechDesign Training	Tewkesbury	Two Days
March	26/03/2025	TechDesign Training	London	Two Days
April	10/04/2025	Introduction to Eurocodes	London	1/2 Day
April	08/04/2025	TechDesign Training	Wakefield	Two Days
April	16/04/2025	TechDesign Training	Tewkesbury	Two Days
May	06/05/2025	TechDesign Training	London	Two Days
May	15/05/2025	Introduction to Eurocodes	Tewkesbury	1/2 Day
May	21/05/2025	TechDesign Training	Wakefield	Two Days
May	28/05/2025	TechDesign Training	Tewkesbury	Two Days
June	18/06/2025	TechDesign Training	London	Two Days
June	26/06/2025	Introduction to Eurocodes	Wakefield	1/2 Day
July	01/07/2025	TechDesign Training	Wakefield	Two Days

\* in certain circumstances locations and dates may change due to demand.

# SOFTWARE TRAINING CALENDAR

MONTH	DATES	TITLE	LOCATION	DURATION
July	08/07/2025	TechDesign Training	Tewkesbury	Two Days
July	29/07/2025	TechDesign Training	London	Two Days
August	07/08/2025	Introduction to Eurocodes	London	1/2 Day
August	13/08/2025	TechDesign Training	Wakefield	Two Days
August	20/08/2025	TechDesign Training	Tewkesbury	Two Days
September	18/09/2025	TechDesign Training	London	Two Days
September	18/09/2025	Introduction to Eurocodes	Tewkesbury	1/2 Day
September	24/09/2025	TechDesign Training	Wakefield	Two Days
September	30/09/2025	TechDesign Training	Tewkesbury	Two Days
October	21/10/2025	TechDesign Training	London	Two Days
October	30/10/2025	Introduction to Eurocodes	Wakefield	1/2 Day
November	05/11/2025	TechDesign Training	Wakefield	Two Days
November	12/11/2025	TechDesign Training	Tewkesbury	Two Days
December	03/12/2025	TechDesign Training	London	Two Days
December	11/12/2025	Introduction to Eurocodes	London	1/2 Day
December	16/12/2025	TechDesign Training	Wakefield	Two Days

\* in certain circumstances locations and dates may change due to demand.



# HOW TO BOOK

To book places on our training events review the calendar to see which courses that you would like to book and make a note of the training type and date shown in the calendar. Next visit the Technal UK website [technal.co.uk](http://technal.co.uk) and navigate to the 'Training Sessions' page where you can request training for both TechDesign and Product Introduction.

Alternatively you can email your requests for training to [hbstraininguk@hydro.com](mailto:hbstraininguk@hydro.com) including the training type, date and the names and email addresses of those attending.

Spaces on each event may be limited to a maximum of three per company and allocated on a first come first served basis.

Upon receiving your request we will check availability and send each attendee confirmation of the booking and details of the event.

Requests for training should be sent no later than two weeks prior to the start date.

IF YOU NEED TO CANCEL PLACES BOOKED  
ON AN EVENT, PLEASE DO SO  
A MINIMUM OF 7 DAYS BEFORE  
THE START DATE.



# TRAINING LOCATIONS

## TEWKESBURY

Hydro Building Systems UK Ltd  
Severn Drive  
Tewkesbury  
Gloucestershire  
GL20 8SF



## WAKEFIELD

Hydro Building Systems UK Ltd  
Unit B Cedar Court Office Park  
Denby Dale Road  
Wakefield  
WF4 3FU



# CUSTOMER PREMISES TRAINING

Where we can, we prefer to hold all training sessions at our dedicated locations, Tewkesbury and Wakefield.

Sometimes this is not possible or practical and we will try to accommodate training at alternative locations where it is practical to do so and can be accommodated.

Please note this request must come via your Account Manager and we will advise if the request is possible and in what time frame. We have limited resources available so this could extend the date to when it could

# FEEDBACK

At the end of each of our training events the participants will be asked to provide feedback via a form which will be available at each event. This enables us to monitor our training quality and make any changes to provide the best possible service to our customers.



IMAGINE WHAT'S NEXT

Head Office  
Severn Drive, Tewkesbury  
Gloucestershire  
GL20 8SF

Tel +44 1684 853500

Northern Office  
Cedar Court Office Park,  
Denby Dale Road, Wakefield  
WF4 3FU

[info.uk@hydro.com](mailto:info.uk@hydro.com)

London Office  
The Building Centre  
26 Store Street, London  
WC1E 7BT

[www.technal.co.uk](http://www.technal.co.uk)