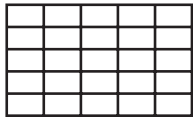
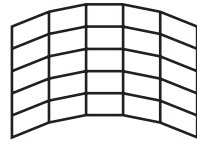


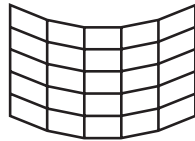
- Applications :



Mur-rideau vertical droit

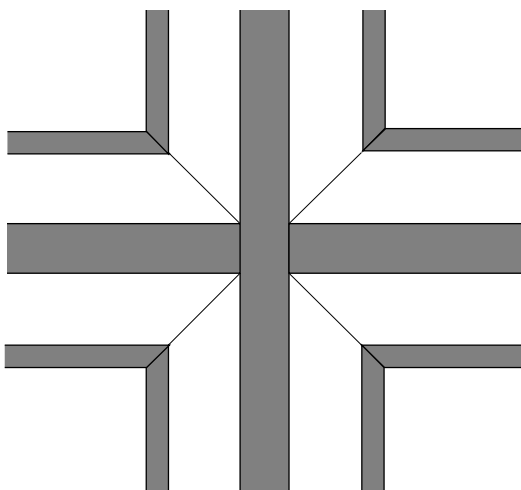
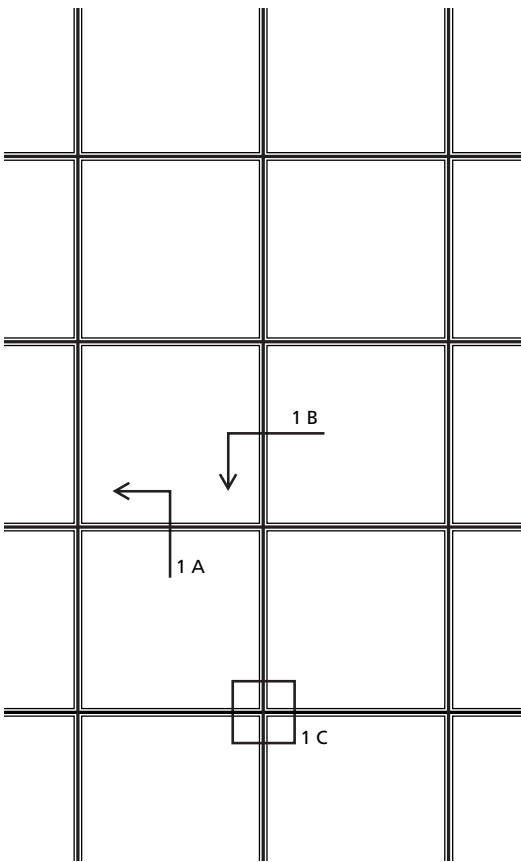


A pans coupés rentrants
(angle maxi : 10°)



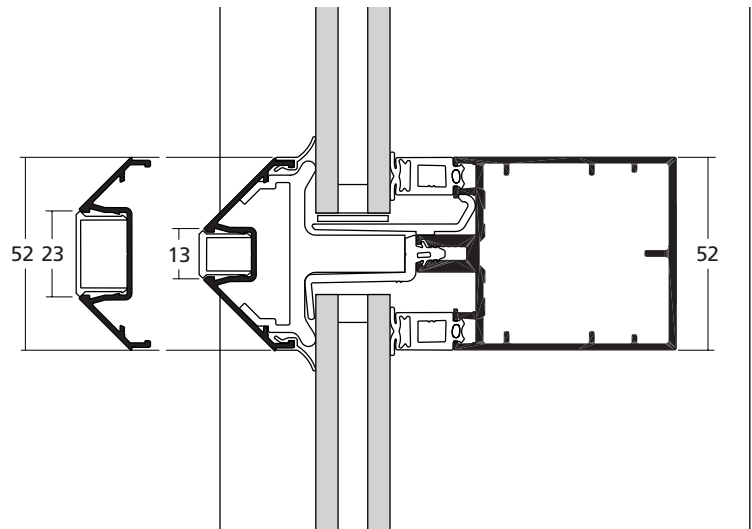
A pans coupés sortants
(angle maxi : 10°)

- Élévation (échelle 1/50) :

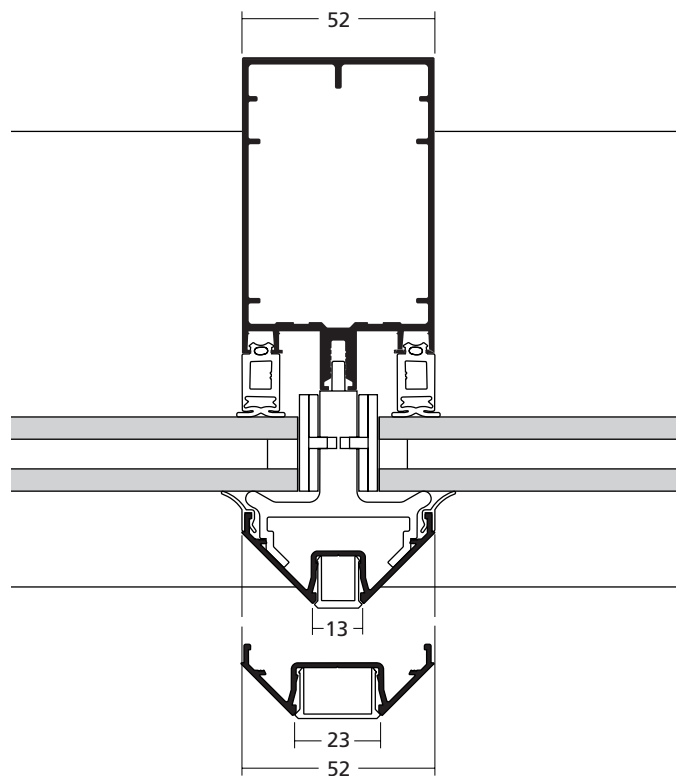


Détail 1 C (échelle 1/2)

- Coupes (échelle 1/2) :



Coupe verticale 1 A



Coupe horizontale 1 B