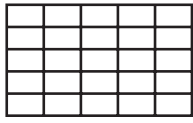
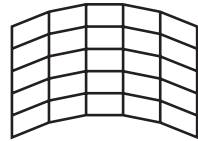


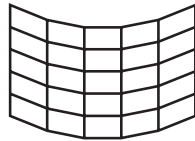
## - Applications :



Mur-rideau vertical droit

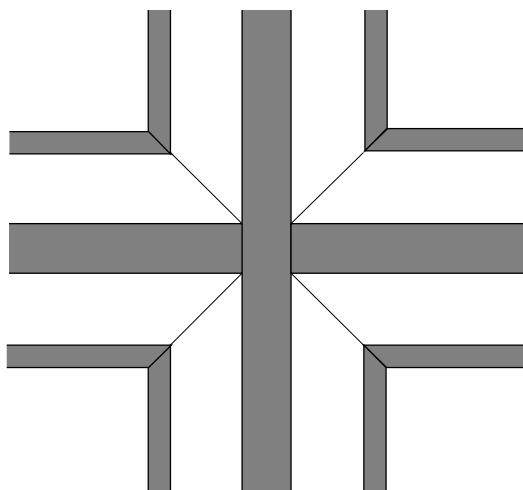
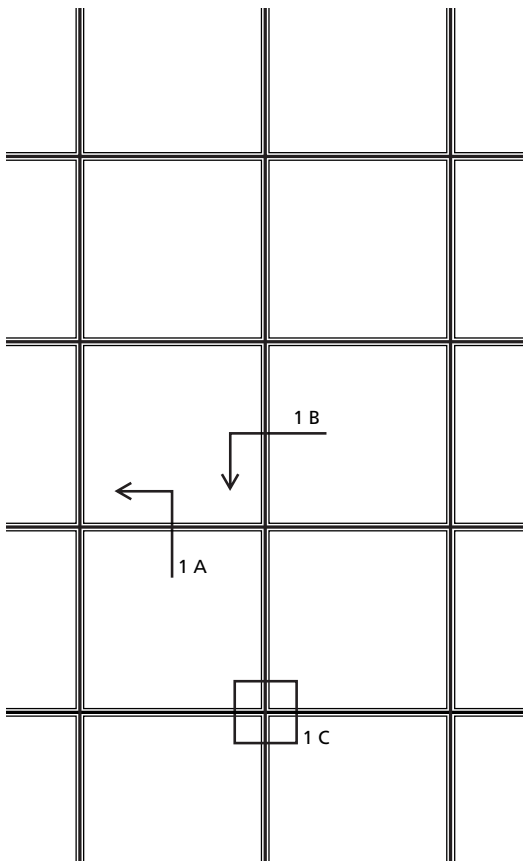


A pans coupés rentrants  
(angle maxi : 10°)



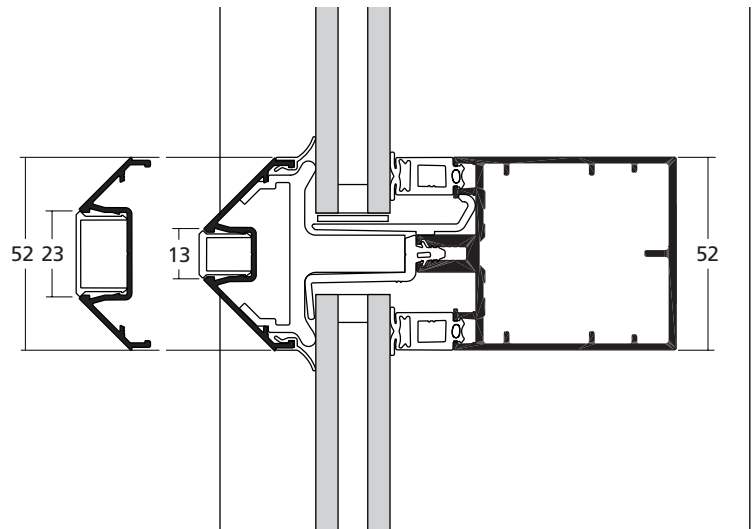
A pans coupés sortants  
(angle maxi : 10°)

## - Élévation (échelle 1/50) :

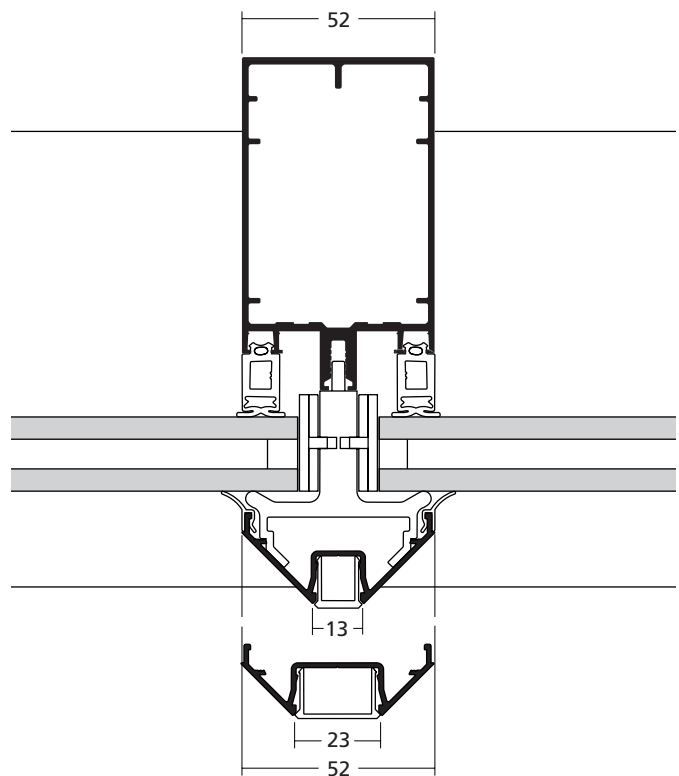


Détail 1 C (échelle 1/2)

## - Coupes (échelle 1/2) :



Coupe verticale 1 A



Coupe horizontale 1 B