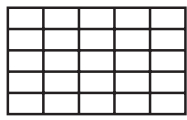
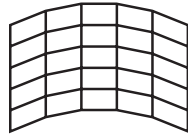


10/07 01 - 1.23

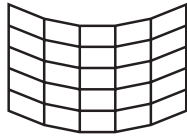
- Applications :



Mur-rideau vertical droit

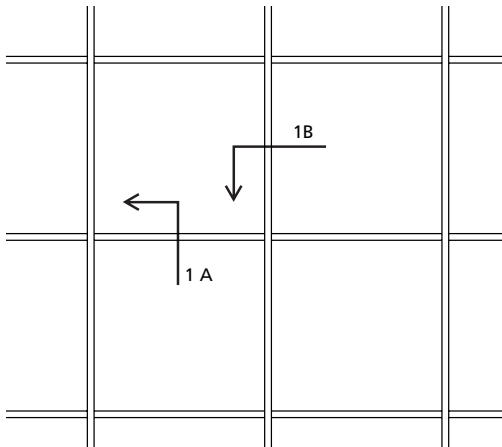


A pans coupés rentrants
(angle maxi : 10°)

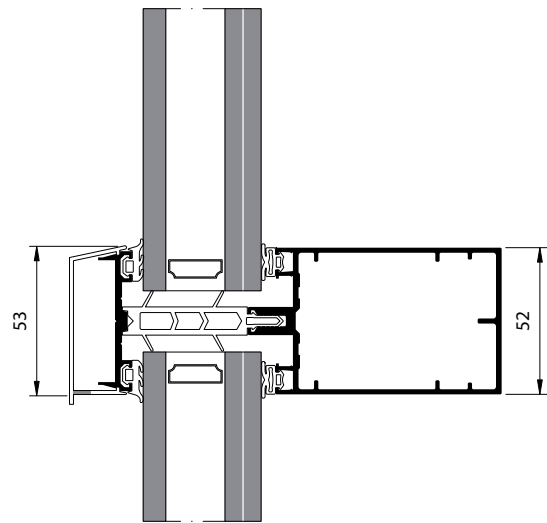


A pans coupés sortants
(angle maxi : 10°)

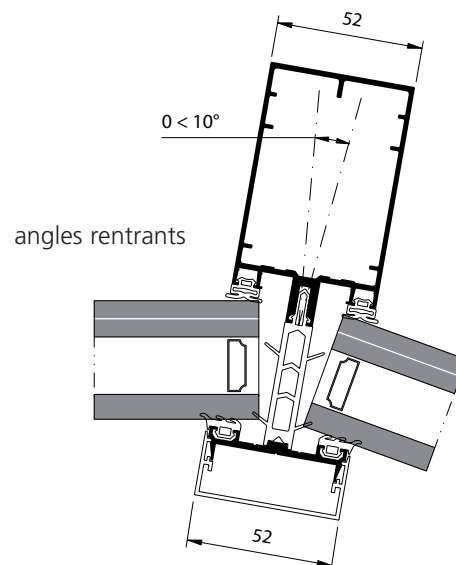
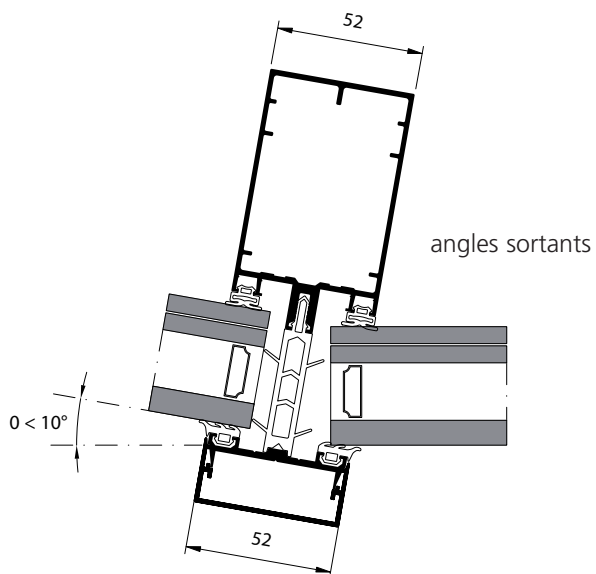
- Elévation (échelle 1/50) :



- Coupes (échelle 1/2) :



Coupe verticale 1 A



Coupes horizontales 1 B